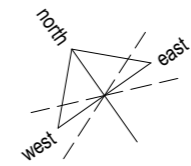
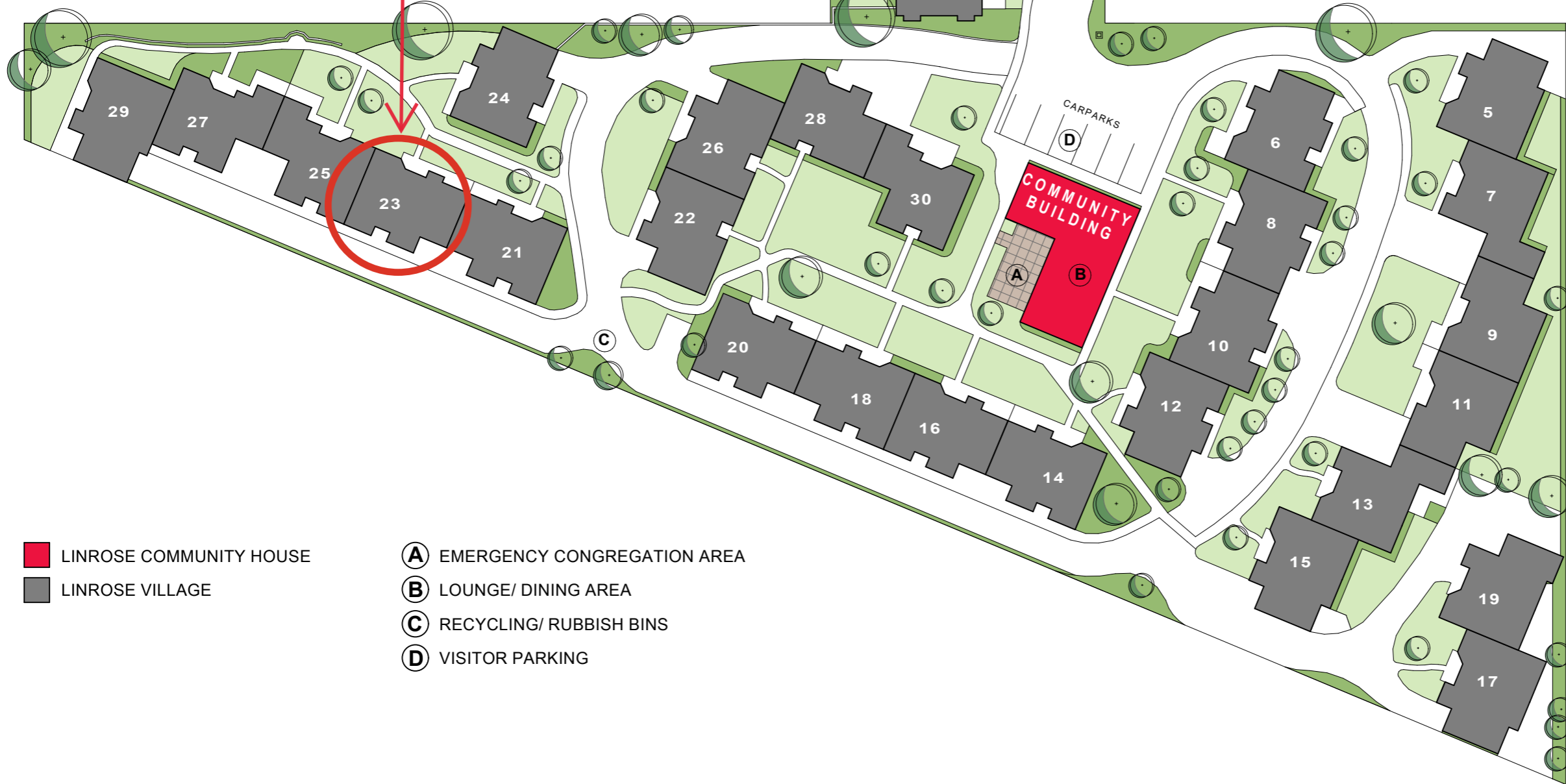


← EASTGATE & CITY SUMNER →

ENTRY / EXIT TO LINWOOD AVENUE

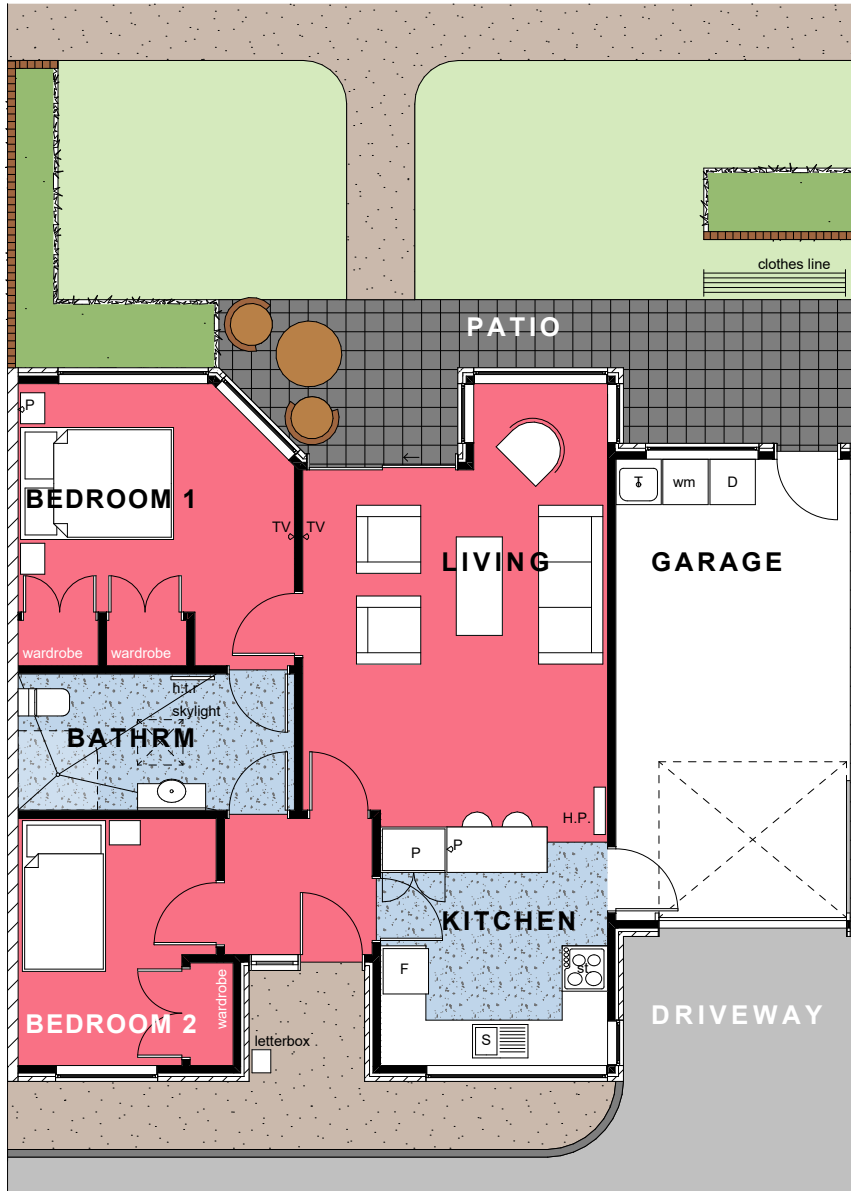


Villa 23
Now Available



■ LINROSE COMMUNITY HOUSE
■ LINROSE VILLAGE

- (A)** EMERGENCY CONGREGATION AREA
- (B)** LOUNGE/ DINING AREA
- (C)** RECYCLING/ RUBBISH BINS
- (D)** VISITOR PARKING



VILLA 23. Two Bedroom with Garage

Net Floor Area - 85m²

ROOM LIST

LIVING	4.0 x 4.8m
KITCHEN	3.0 x 3.1m
BATHROOM	1.8 x 3.6m
MASTER BEDROOM	3.5 x 3.2m
SECOND BEDROOM	2.5 x 2.9m
GARAGE	3.0 x 6.0m

FEATURES

- Well appointed kitchen with electric ceramic hob, dish drawer and vinyl floor coverings
- Open plan dining and living areas, with carpet floor coverings and heatpump
- Bathroom with toilet, vanity and level access shower, heater, heated towel rail and vinyl floor coverings
- Main bedroom to accommodate double bed and single guest bedroom, both with built in wardrobes
- Single garage with automatic garage door and integrated laundry facilities with exterior access to clothesline
- Kitchen blinds
- Patio with garden outlook

