

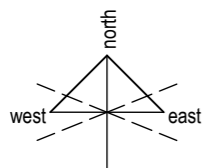
Thorrington

VILLAGE & HOME

RIVERVIEW STREET

- THORRINGTON HOME
- THORRINGTON COMMUNITY HOUSE
- THORRINGTON VILLAGE
- THORRINGTON ACCESSORY FACILITIES

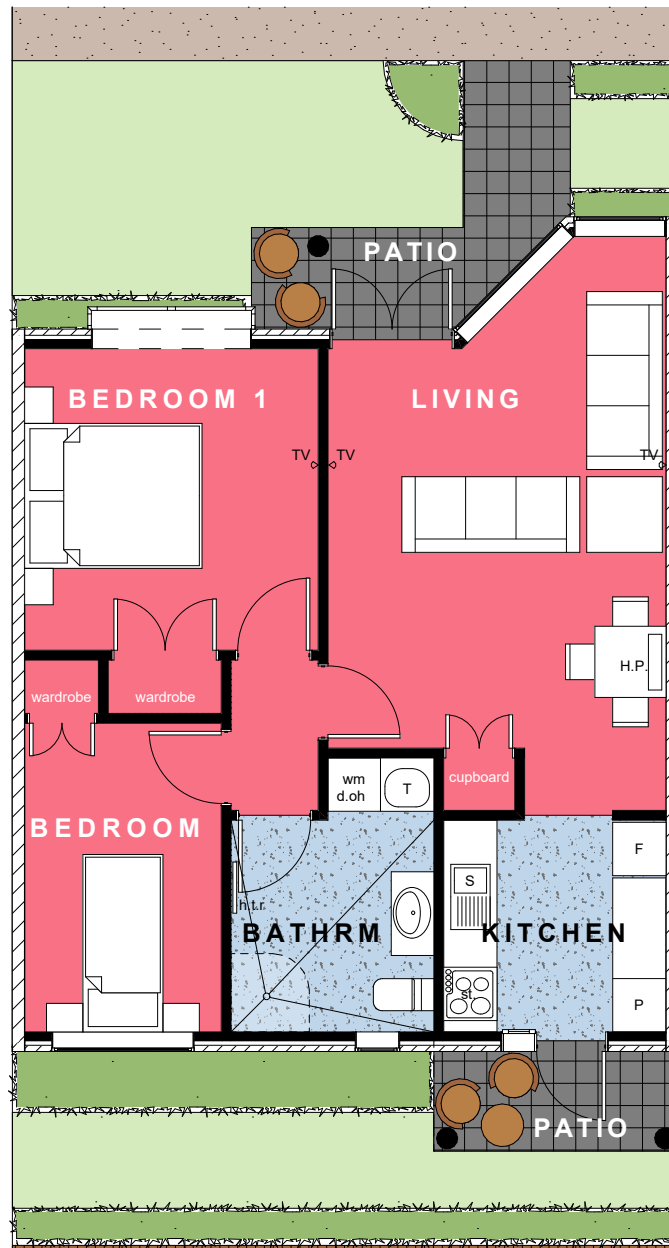
- (A)** EMERGENCY CONGREGATION AREA
- (B)** LETTERBOXES
- (C)** RECYCLING/ RUBBISH BINS
- (D)** STAFF & VISITOR PARKING
- (E)** RECEPTION/ OFFICE AREA
- (F)** LOUNGE/ DINING AREA
- (G)** CARPORTS



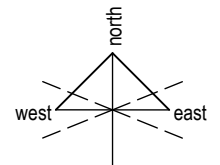
Villa 17
Now Available

Archer
Villages & Care Homes

0 5 10 15 20 25 30m



Villa Price \$419,900



VILLA 17. Two bedroom

Net Floor Area - 58m²

ROOM LIST

LIVING	3.8 x 4.5m
KITCHEN	2.4 x 2.5m
BATHROOM	2.3 x 2.5m
MASTER BEDROOM	3.4 x 3.3m
SECOND BEDROOM	2.2 x 3.5m

FEATURES

- Well appointed kitchen with electric ceramic hob, range hood, dish washer, and vinyl floor coverings
- Open plan dining and living areas, with carpet floor coverings and heatpump
- Bathroom with toilet, vanity and level access shower, heater, heated towel rail and vinyl floor coverings. Integrated laundry facilities
- Main bedroom to accommodate queen bed and single guest bedroom, both with built in wardrobes
- Drapes throughout, kitchen blinds
- Patio with garden outlook