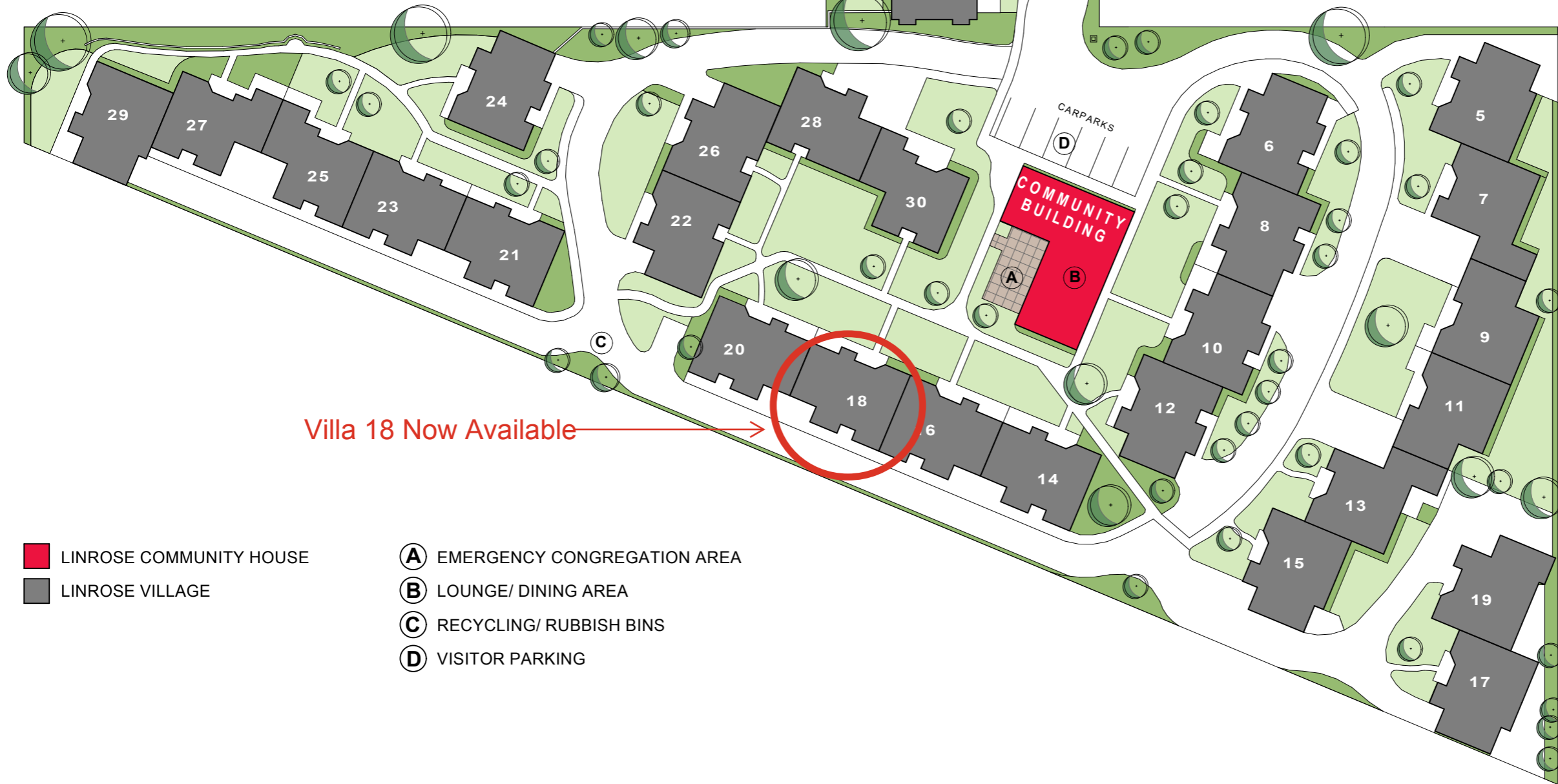
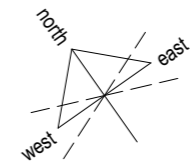




← EASTGATE & CITY

SUMNER →

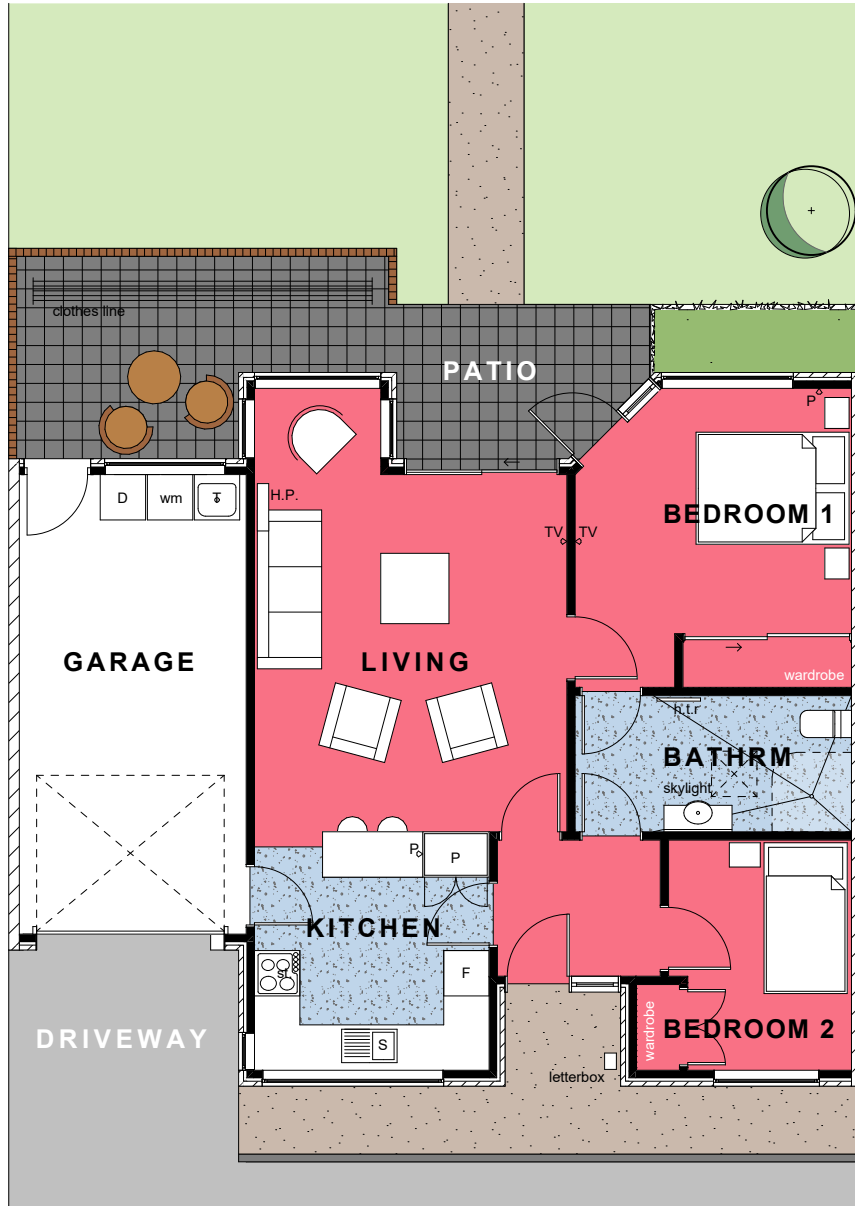
ENTRY / EXIT TO LINWOOD AVENUE



Villa 18 Now Available

 LINROSE COMMUNITY HOUSE  
 LINROSE VILLAGE

- (A)** EMERGENCY CONGREGATION AREA
- (B)** LOUNGE/ DINING AREA
- (C)** RECYCLING/ RUBBISH BINS
- (D)** VISITOR PARKING



Villa Price \$429,900



**VILLA 18. Two Bedroom with Garage**

Net Floor Area - 84m<sup>2</sup>

**ROOM LIST**

LIVING	4.1 x 4.7m
KITCHEN	2.9 x 3.1m
BATHROOM	1.8 x 2.8m
MASTER BEDROOM	3.6 x 3.2m
SECOND BEDROOM	3.0 x 2.4m
GARAGE	3.0 x 6.0m

**FEATURES**

- Well appointed kitchen with electric ceramic hob, dish drawer and vinyl floor coverings
- Open plan dining and living areas, with carpet floor coverings and heatpump
- Bathroom with toilet, vanity and level access shower, heater, heated towel rail and vinyl floor coverings
- Main bedroom to accommodate double bed and single guest bedroom, both with built in wardrobes
- Single garage with automatic garage door and integrated laundry facilities with exterior access to clothesline
- Kitchen blinds
- Patio with garden outlook

